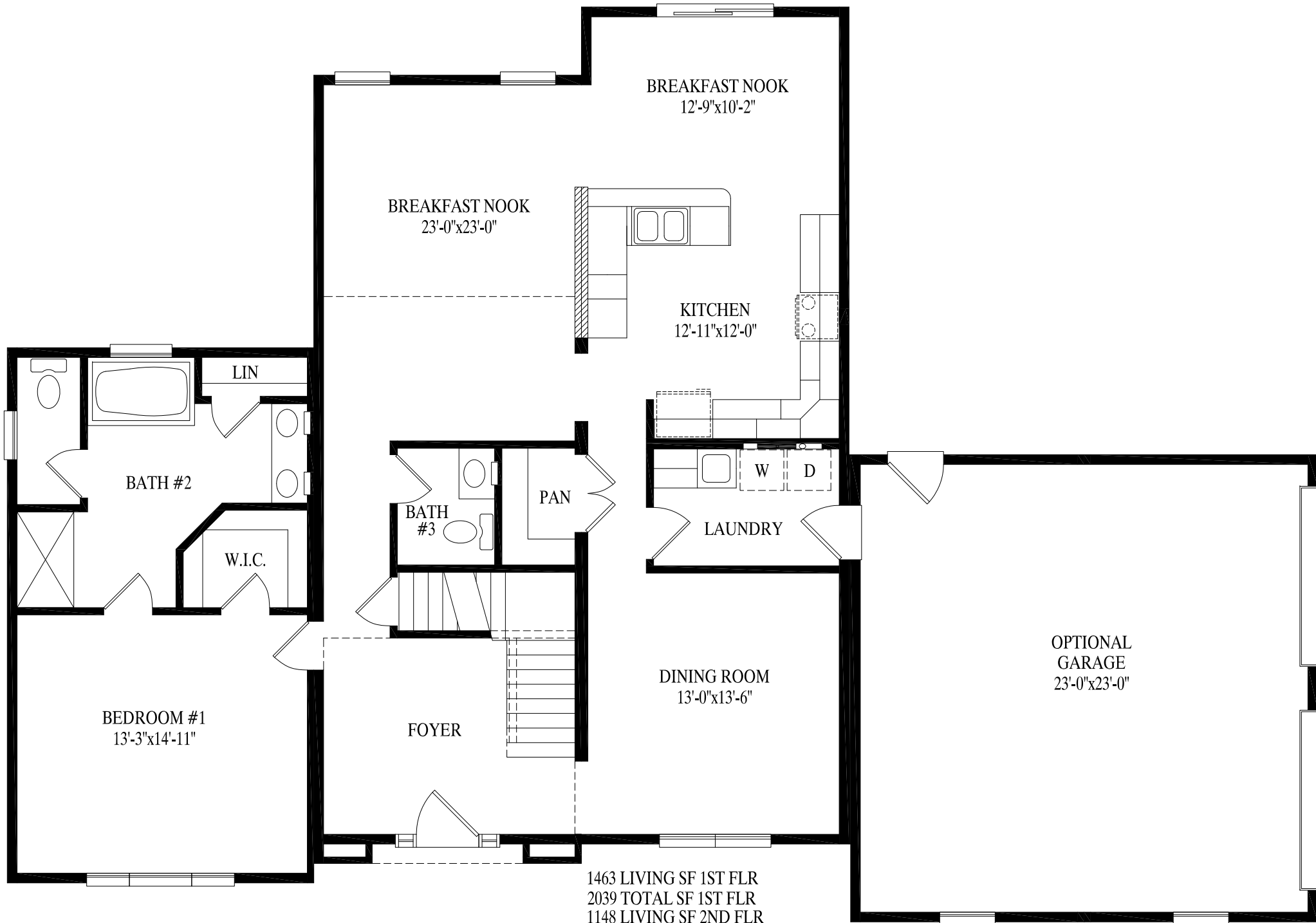
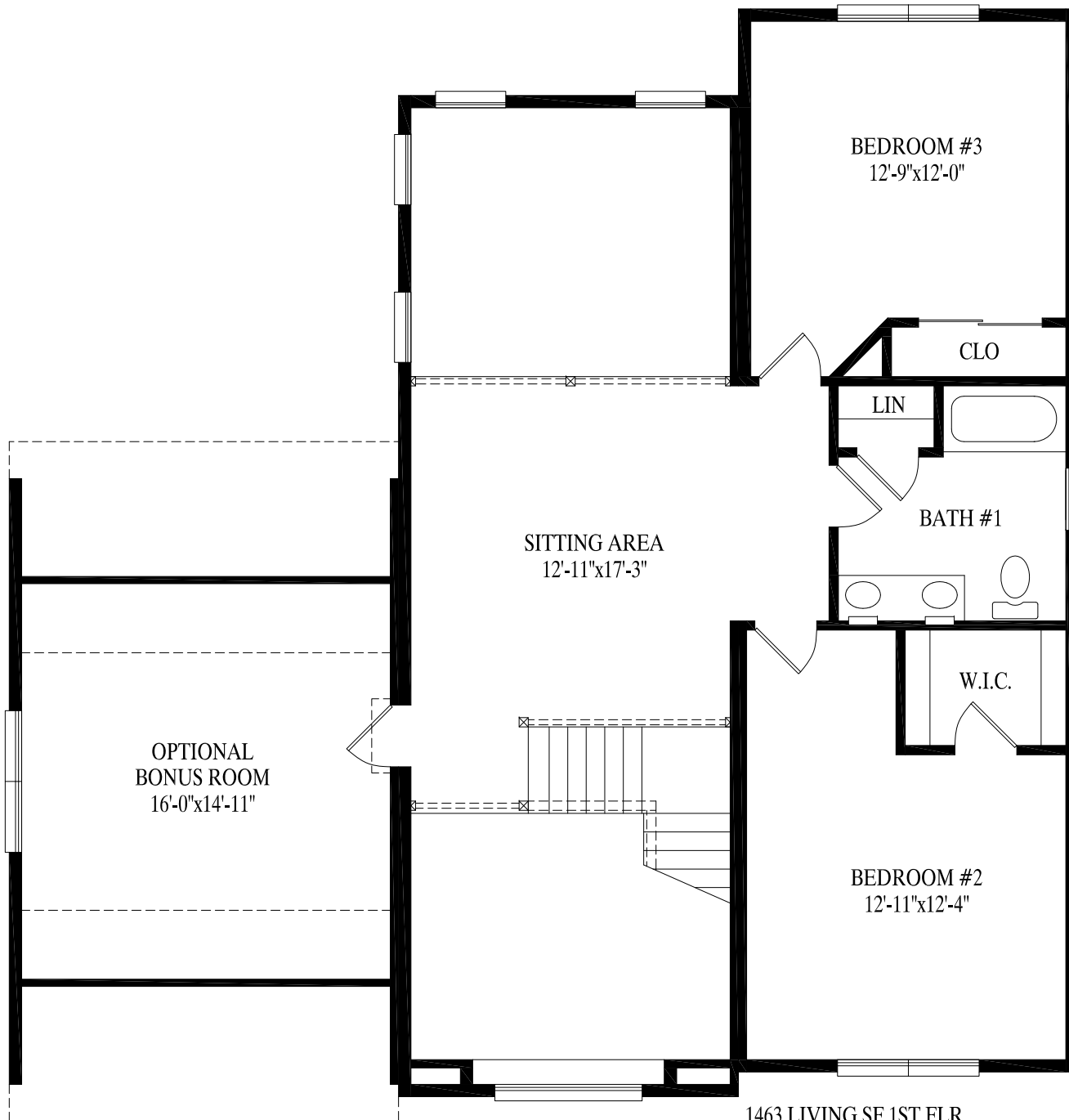


**PROFESSIONAL
BUILDING
SYSTEMS, INC.**



1463 LIVING SF 1ST FLR
 2039 TOTAL SF 1ST FLR
 1148 LIVING SF 2ND FLR
 2611 TOTAL SF 1ST AND 2ND FLR
 3187 LIVING SF 1ST AND 2ND FLR



1463 LIVING SF 1ST FLR
 2039 TOTAL SF 1ST FLR
 1148 LIVING SF 2ND FLR
 2611 TOTAL SF 1ST AND 2ND FLR
 3187 LIVING SF 1ST AND 2ND FLR