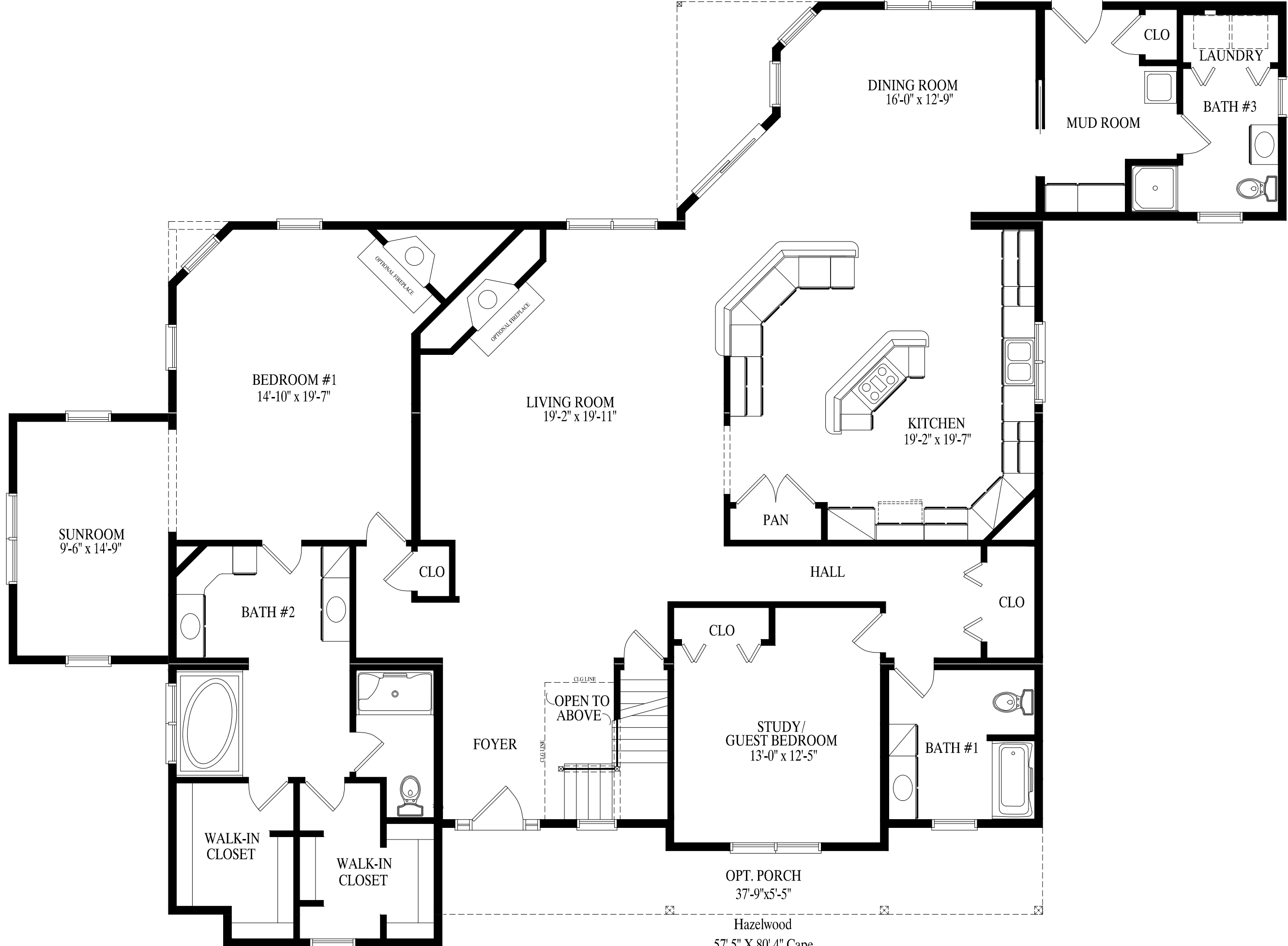




**PROFESSIONAL
BUILDING
SYSTEMS, INC.**



Hazelwood
 57' 5" X 80' 4" Cape
 2857 sq. ft. first floor

PROPOSED SECOND FLOOR DRAWINGS ARE TO BE USED AS A GUIDE ONLY. BEAM SIZE IS BASED ON SUGGESTED PLAN SHOWN. C.B.S. WILL NOT ASSUME ANY LIABILITY OR RESPONSIBLE FOR ALTERED CONSTRUCTION OF SECOND FLOOR LAYOUT.

BEDROOM #2
16'-5" x 16'-2"

WALK-IN CLOSET

LOFT
15'-6" x 13'-0"

STORAGE

BEDROOM #3
15'-0" x 19'-10"

LIN

BATH #4

OPEN TO BELOW

WALK-IN CLOSET

BEDROOM #4
13'-0" x 13'-5"

WALK-IN CLOSET

Proposed 2nd Floor - 1837 sq. ft.